



**2005 – 2009 Mustang
Detail Corral
CDC #0511-7000-12**



About the Product:

The **Detail Corral** is designed and manufactured exclusively by Classic Design Concepts using OE quality materials. This product is intended for light weight storage. CDC will not be responsible for failure of product due to over loading.

Note: By design, the “Living Hinges” will become more flexible over time; this *is not* part failure. *Read instructions thoroughly before installing.*

Kit Components:

CDC Part #s

▪ Detail Corral Assy.	
▪ 2 Threaded “S” Brackets	0511-5501-01
▪ 2 “S” Brackets with ¼” Push Pin Holes	0511-5501-01
▪ 4 M6-1.0 x 6mm Set Screws	30000
▪ 2 M6-1.0 x 10mm Socket Cap Screws	30001
▪ 2 M6 Washers	55000
▪ 2 Push Pin Fasteners	65003
▪ 2 ¼”-20 Stud Plates	60003
▪ 4 ¼”-20 Flange Nuts	45014
▪ 4 Sheet Metal Push Clips	85004
▪ Installation Guide w/Templates	CD4II3BS

Tools Required:

▪ 3mm Allen Wrench	▪ Scissors
▪ 5mm Allen Wrench	▪ X-acto Knife or Razor Blade
▪ Push Pin Removal Tool	▪ Straight Edge
▪ Medium Strength Thread Locker	▪ Sharpie or other fine tip marker
▪ Side Cutters	▪ 7/16” Wrench

Detail Corral Installation Procedure:

1. Open Trunk.
2. With a Push Pin removal tool, separate the wire harness from the deck lid.
3. Carefully remove the Push Pin fasteners from the wire harness with Side Cutters and or a razor blade and discard.
4. Cut out the provided Bracket Location templates (last page of instructions) with scissors or X-acto knife. **Note:** You will have a total of 2 templates. (Figure 1)
5. Place templates as shown in Figure 2 and mark the Bracket location with a Sharpie for all 4 locations. **Note:** Flip templates to mark opposite side of vehicle.

Figure 1

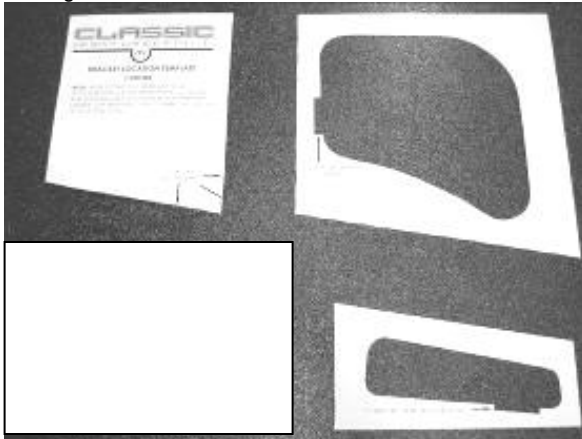


Figure 2

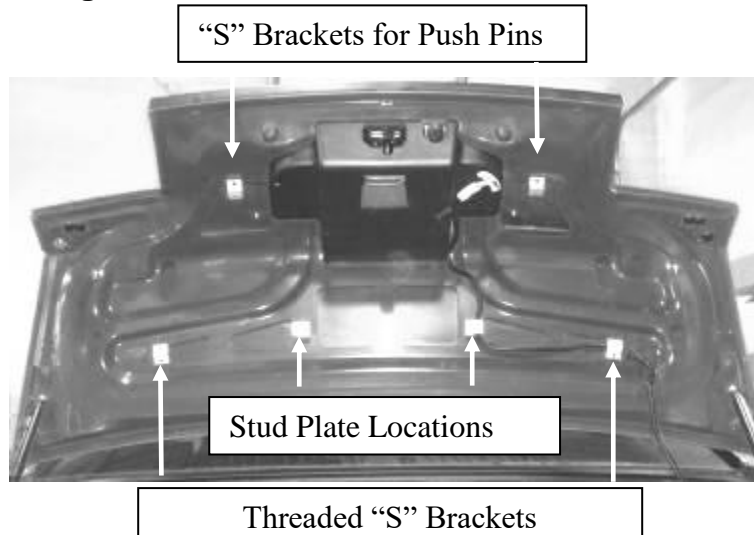


6. Install the 4 Brackets as shown in Figure 3. We recommend using a small amount of medium strength thread locker on the threads of the set screws. Slide the brackets over the sheet metal and tighten the set screws with a 3mm Allen wrench.

Note: Make sure the threaded “S” Brackets are in the location shown in Figure 3.

Caution: Do not over tighten screws.

Figure 3



CD4II3BS

7. Install the stud Plates. Refer to previous picture for general location. With a Straight Edge, draw a reference line as shown. Measure up $7/16$ " from reference line. Place bottom edge of the Stud plate on the line and attach with the Sheet Metal Clips as shown in photo below. Note: Stud plate will be centered left to right.

Figure 4

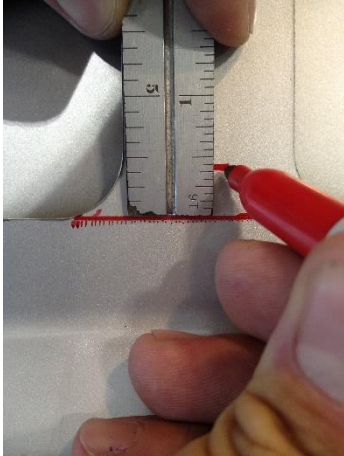


Figure 5

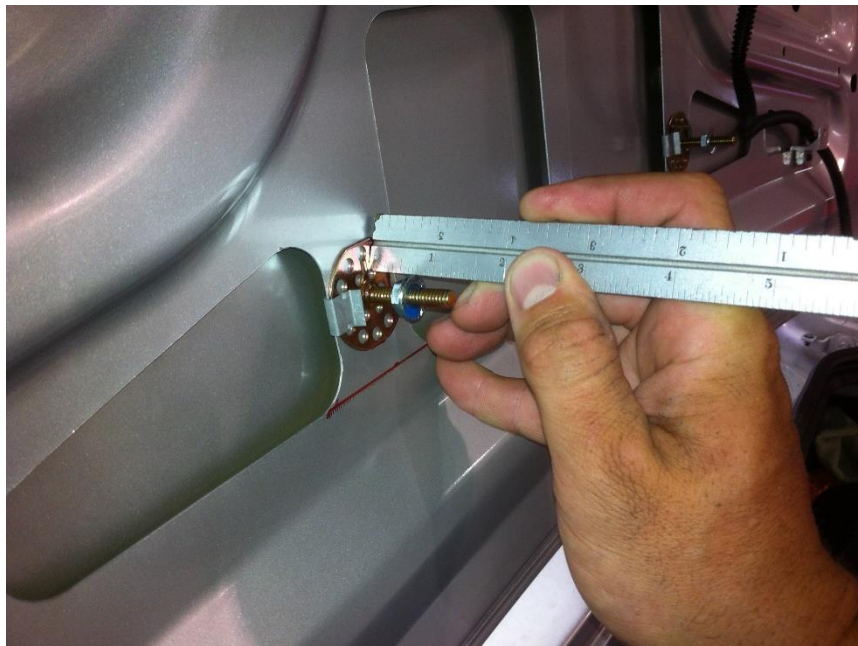


Figure 6



8. Install $1/4$ "-20 Flange nuts on to the Stud Plates. Thread nut on to plate with the flange side of the nut facing rearward of car, with a small amount of Thread Locker. Measure $3/4$ " from base of Stud Plate to flange of nut.

Figure 7



CD4II3BS

9. Install the **Detail Corral**. Place the Detail Corral in position by aligning the Studs from the Stud Plates to the inboard holes of the Detail Corral (accessible through the center pocket). Note: The Studs will help hold the Detail Corral in place while the fasteners are installed. Fasten the remaining $\frac{1}{4}$ "-20 Flange nuts to secure the center section. Install the M6-1.0 Socket Cap Screws and flat washers to secure the outer portion of the Detail Corral to the Threaded "S" Brackets. (Figure 8). Install the $\frac{1}{4}$ " Push Pins to secure the "Wings" of the Detail Corral. (Fig 9).

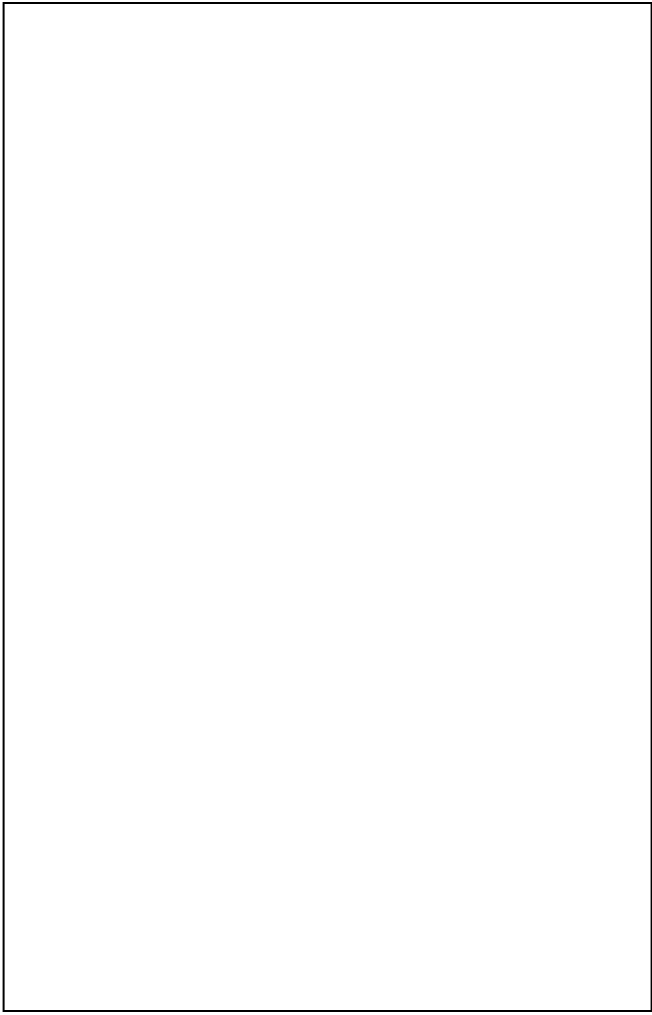
Figure 8



Figure 9



Thank you for choosing Classic Design Concepts for your restyling needs. If you have any questions or concerns regarding installation, please contact Tech@classicdesignconcepts.com or call 866-624-7997



BRACKET LOCATION TEMPLATE

CD4113BS

NOTE: AFTER CUTTING OUT TEMPLATES (AS SEEN PICTURED BELOW) HOLD UP TO SHEET METAL IN THE APPROPRIATE LOCATIONS AND MARK BRACKET LOCATIONS WITH A PERMANENT MARKER. FLIP TEMPLATES OVER TO MARK OPPOSITE SIDE. (6 LOCATIONS TOTAL)

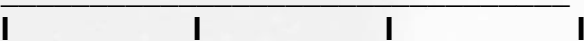


CUT ALONG
DOTTED LINES

"S" BRACKET WITHOUT
THREADED HOLE

CUT OUT ALONG LINE

Scale in Inches:



CUT OUT ALONG LINE

CUT OUT ALONG LINE

"E" BRACKET WITH THREADED HOLE

"S" BRACKET WITH THREADED HOLE