



1994-2004 Mustang

Classic Lightbar Installation Instructions

The Classic Lightbar is NOT intended for rollover protection.

Note: Read installation instructions before starting.



Component List:

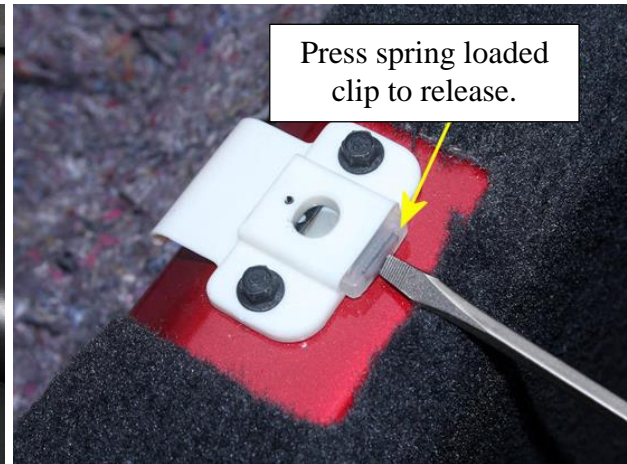
- | | |
|--|--|
| <input type="checkbox"/> 1 – Lightbar | <input type="checkbox"/> 2 - 1/8" Rivets |
| <input type="checkbox"/> 4 – Poly Plugs | <input type="checkbox"/> 2 – Blue T-Tap Connectors |
| <input type="checkbox"/> 4 – 5/16"-18 x 2.5" Bolts | <input type="checkbox"/> 2 – Blue Spade Connectors |
| <input type="checkbox"/> 4 – 5/16" Washers | <input type="checkbox"/> 2 – Lightbar Brackets |

Tools Required:

- | | |
|--|--|
| <ul style="list-style-type: none">• 1/4" Drive Ratchet• 1/4" Drive 3" Extension• Drill Bits 1/8", 19/64"*, 13/32"*• 1/4" Drive 7mm Socket• Drill Motor• 3/8" Drive Ratchet• 3/8" Drive 3" Extension• T-50 Torx Bit• 1/4" Allen Wrench• Wire Crimpers• T-25 Torx Bit (99-04 Models seatbelt loop modification)• 1/4" Drive 10mm Socket (94- 02 Models rear seat removal)• 3/8" Drive 18mm Socket (03-04 Models rear seat removal) | <ul style="list-style-type: none">• Rivet Gun• Putty Knife• Rubber Mallet• Step Bit• 1" Hole Saw• 1 3/4" Hole Saw• Door Trim Tool (Fork Tool)• Center Punch |
|--|--|

1994 – 2004 Classic Lightbar Installation Instructions

1. **Remove Rear Seat.** Use seat belt to release seat bottom clips, and remove seat bottom.



Remove the (2) 10mm fasteners that secure the seat back. Lift seat upward releasing it from bracket at the top of seat back. **NOTE: '03-'04 Models have Child Restraint Bracket which require the use of 18mm socket.**

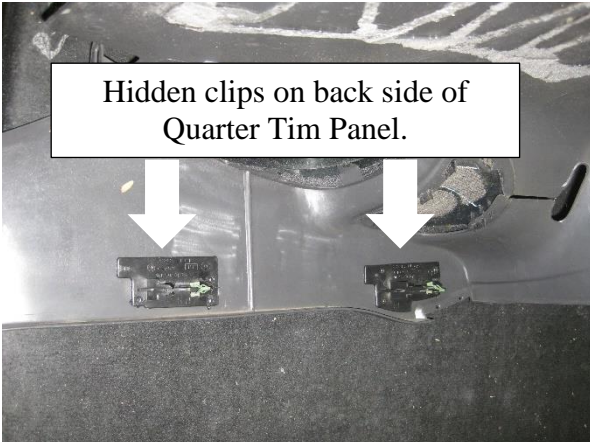


2. **1999-2004**, remove Seat Belt Bolts (**T-50 Torx**) on both driver and passenger sides, and remove Sill Plates (lift to release clips). **1994-1998**, the Seatbelt Retractor will need to be removed from behind the Trim Panel during the next step.



CD4II3AV

3. **Remove Quarter Trim Panels from both driver and passenger sides. 1999-2004,** remove plastic "T" below seatbelt (driver side only). Remove the (2) push pin fasteners that secure the panels to the back wall. Remove the single push pin fastener located on the top of the panel on the down standing flange. Dislodge the (2) small push pin fasteners in the rubber trim. Grasp Trim Panels and pull forward to release (2) hidden clips that secure the Panels to the "B" Pillar. **1994 – 1998** follow same steps as above although, Quarter Trim Panels will need to be dislodged partially to gain access to the Seatbelt Retractor. Remove the plastic "T"s and Speaker Grilles. Remove the Seatbelt Retractor (T-50 Torx.), sliding Retractor through Speaker hole in Quarter Trim Panel.

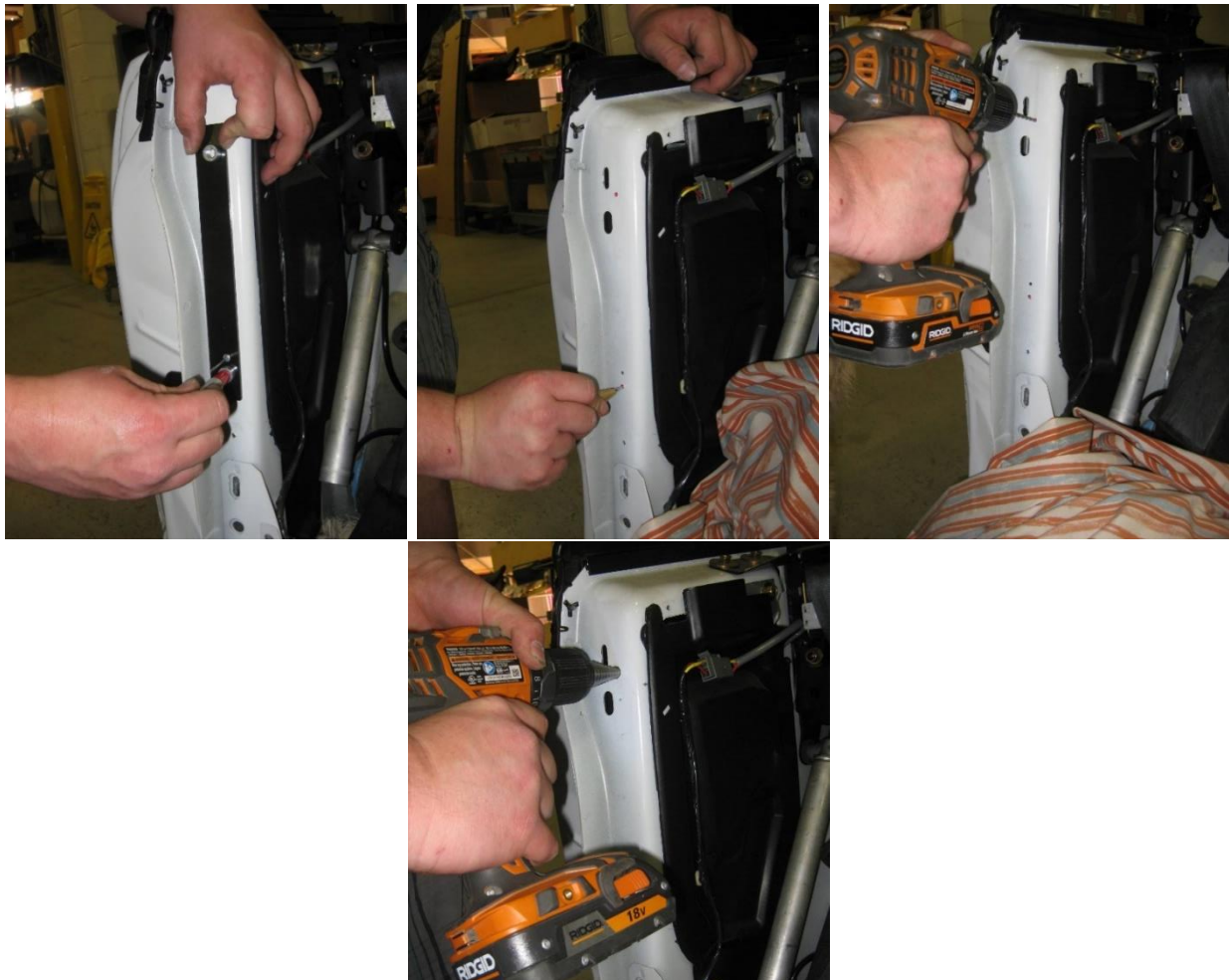


CD4II3AV

4. Remove (2) 7mm screws from speaker mounts (one in the door jam and one at the top.)
Allow speakers to pivot toward the center of the car and rest on the floor.



5. **Mount Lightbar Brackets.** **NOTE:** There is a 1/8" hole in the Lightbar Bracket, and a 1/8" hole in the "B" Pillar (do not mistake for the Speaker Housing fastener hole). Temporarily place Bracket against "B" Pillar, using the supplied 1/8" Rivet as a locator. Position the Bracket so it is completely parallel to the "B" Pillar. Mark the centers with a Sharpie. Remove Bracket and center punch the marked locations. Drill 1/8" pilot holes. Using a Step Bit, drill holes to 9/16"- 5/8". **Caution:** Do not interrupt the 1/8" locator hole as it is used to mount the brackets in the next step.



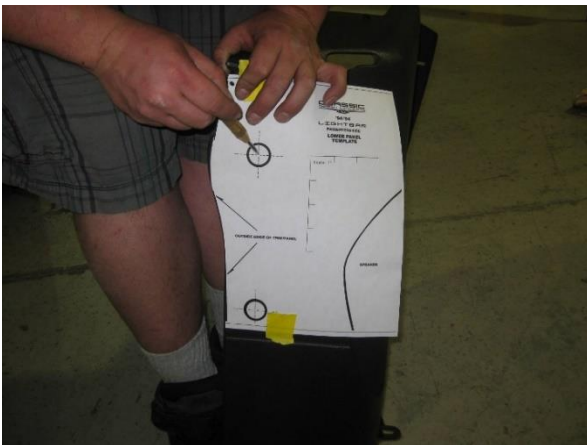
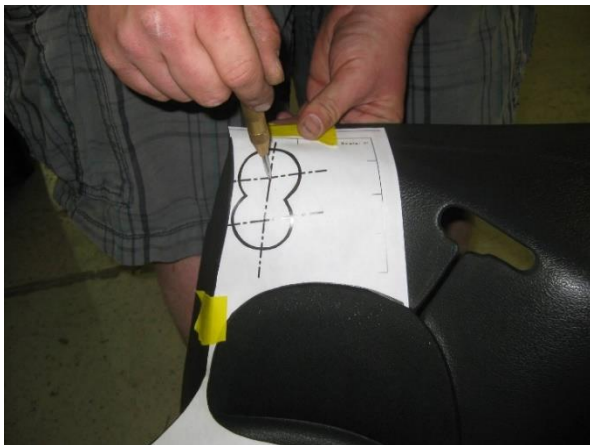
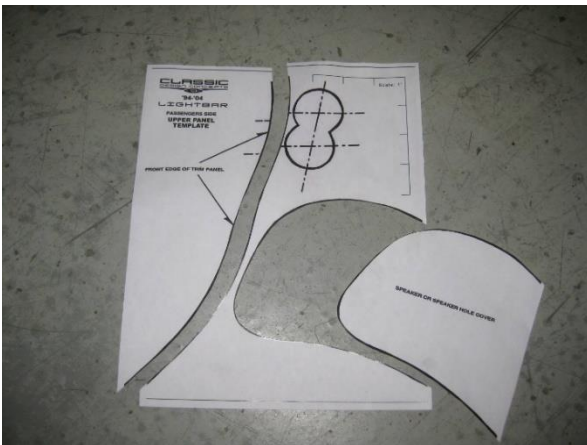
CD4II3AV

Pull Plastic Quarter Covers loose from vehicle by prying with a putty knife. (2) push pins and flexible sealer secure them. Place Bracket behind "B" Pillar, align Nutserts with holes previously drilled, and attach Bracket with the supplied 1/8" Rivet. **NOTE: The Nutserts on brackets MUST face rear of vehicle for proper assembly Lightbar will not tighten correctly if reversed.**



6. Reinstall plastic Quarter Covers and Speakers.

7. Mark hole centers on Quarter Trim Panels. Use the supplied paper templates. Temporarily hold them in position with masking tape. Mark the centers with center punch.

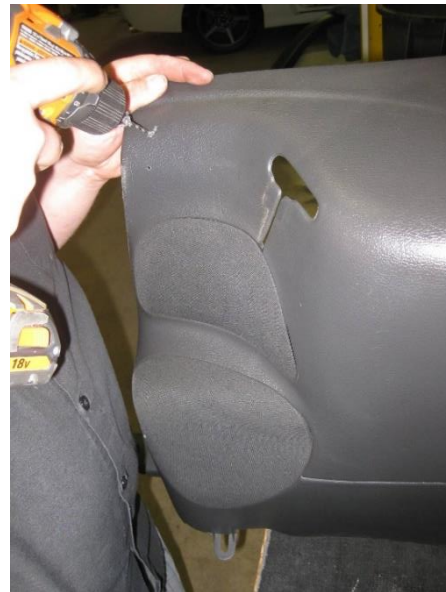


CD4II3AV

8. **Remove Upper mounting clip from back side of Quarter Trim Panels.** With a putty knife and rubber mallet, remove the upper mounting clip. Discard clips, they will not be re-used.
CAUTION: Do not twist the putty knife, as this may leave a stress mark on the show side of the Trim Panel.



9. Drill the (4) locations on each trim panel previously marked with paper templates.

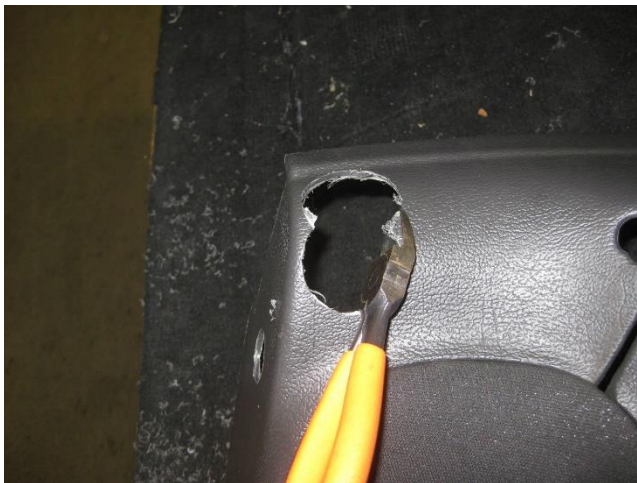


10. Drill (2) 1" Holes on front edge of each Trim Panel. **HINT:** Drill with 1" Hole Saw from the inside of the Panel to eliminate the risk of damaging the Panel by slipping.



CD4II3AV

11. Drill the previously drilled 1/8" pilot holes at the top of the Trim Panels with 1-3/4" Hole Saw. After drilling, remove the points with a pair of side cutters to create an oval opening. Again, drill from the inside of the Panel.



12. **Reinstall Quarter Trim Panels and Sill Plates.** Before reinstalling the Driver Side Panel, remove the Speaker Grill.



CD4II3AV

13. Reinstall Seatbelt bolts.

14. Crimp the supplied Blue Spade Connectors on both the 3rd Brake Light wires.

15. Time to install the CDC Lightbar! **NOTE:** Do not attempt this by yourself, ask for help!

Fish the 3rd Brake Light wiring through the drilled oval in the top of the Trim Panel, and out the Speaker opening temporarily. Slide both sides of the Lightbar simultaneously through the oval slots in the Trim Panels. Fish 3rd Brake Light Wiring behind Trim Panel to the floor.

Caution: Safely route wire to avoid getting pinched behind the steel bar.



16. Install the 5/16" x 2.5" bolts and Washers to secure Lightbar. Start all (4) bolts before tightening with 1/4" Allen Wrench. Press on Lightbar to achieve desired fitment against the Trim Panels and tighten bolts.

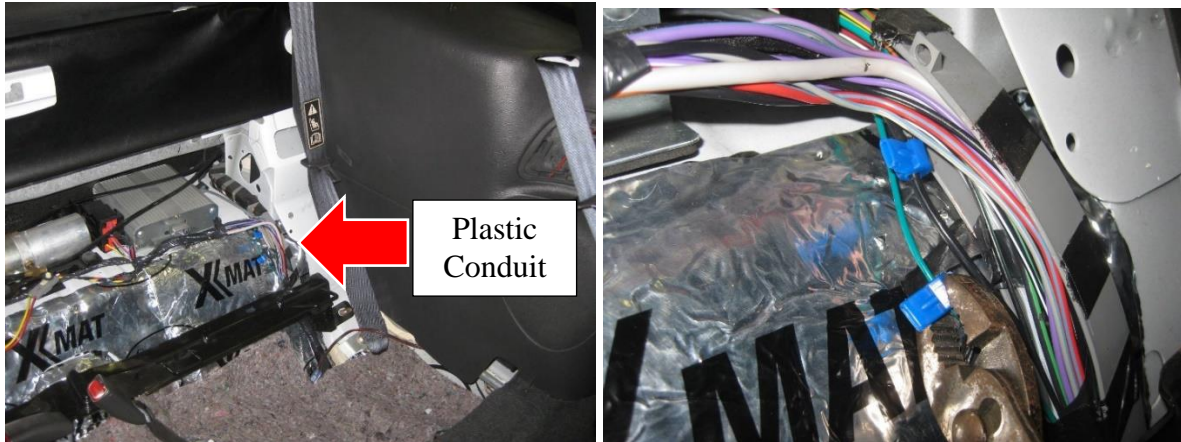


17. Install the (4) Poly Plugs in the Quarter Trim Panels.



CD4II3AV

18. Finish 3rd Brake Light Wiring. Locate the bundle of wires in the plastic conduit on the Driver Side. Remove tape and pull out the bundle of wires. If you are installing Lightbar in '94 - '98, you'll need to locate the **+RED** with **GREEN STRIPE**, and **-BLACK** wires. If you are installing Lightbar in '99 - '04, you'll need to locate the **+GREEN** and **-BLACK** Wires. Once you find the correct wires, crimp the provided Blue T-Tap Connectors with pliers, as shown below.



Connect Lightbar 3rd Brake Light Wires to the vehicle. Make sure the metal Spade is properly inserted into the T-Tap.

1994 – 1998

RED Lightbar Wire to **RED** w/**GREEN STRIPE** vehicle wire

BLACK Lightbar Wire to **BLACK** vehicle wire

1999 – 2004

RED Lightbar Wire to **GREEN** vehicle wire

BLACK Lightbar Wire to **BLACK** vehicle wire

Depress brake pedal and verify correct operation of 3rd Brake Light.
If Brake Light isn't working, double check your connections.

19. Reinstall back seat back and bottom.

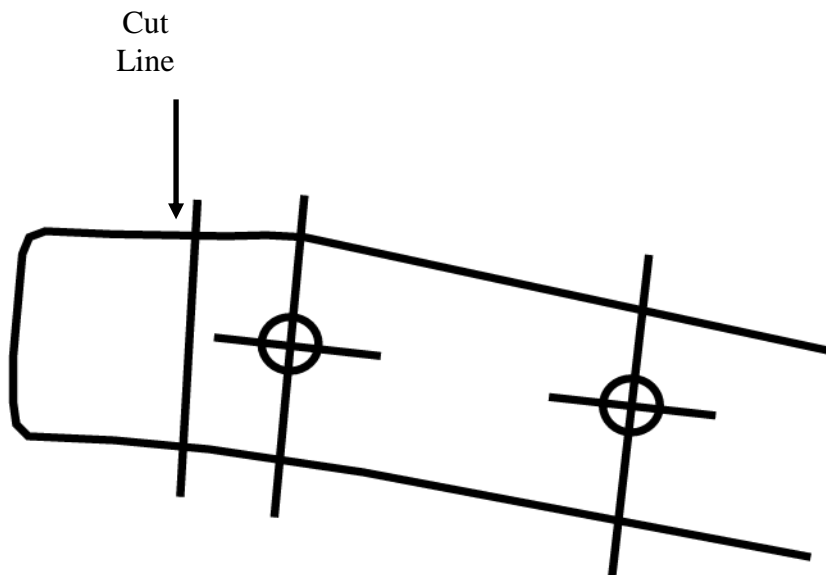
20. **IMPORTANT!!!** Check clearance between SEAT BELT RETAINER (Driver and Passenger Seats), and Lightbar. If the Retainer appears to make any contact with the Lightbar, gently bend the Retainer. There is some risk involved with bending the Retainers, as the plastic becomes more brittle with age and they may crack as a result. CDC will not be responsible for any damage that may occur, if this step was not taken. If bending the Retainer doesn't provide enough clearance, the Retainers can be completely removed, or turn to the last page for other suggestions.

1999 - 2004 Mustang Bulletin

Due to the larger size of the seat belt shoulder loop on the 1999 -2004 Mustang, modifications of this loop is necessary or the purchase of new loop is recommended PART # (Left) – F4ZZ 76610C07 A (Right) – F4ZZ 76610C06 A

Seat Belt Retainer Modification Instructions:

1. Lift headrest and headrest support bars trim all the way up.
2. Insert tongue depressor (or slim jim) down the front side of the headrest bar. Push depressor down as far as possible. When the depressor is beneath the headrest trim piece, push headrest all of the way down.
3. Lift headrest to remove.
4. Bend seat belt shoulder strap loop down so that the leg that attaches under headrest is flat.
5. Remove seatbelt loop fasteners with torx bit.
6. With template shown below, center punch for new holes and mark for cut off.
7. Drill 1/8" Pilot holes.
8. Drill 13/32" hole in plastic only (on topside only)
9. Drill 19/64" hole through remaining material.
10. Cut off end on along cut off line.
11. Clean off any burs and re-install.



If printing this document from a Computer, verify that the above Dimensions measure out.

Thank you for choosing Classic Design Concepts for your restyling needs. If you have any questions or concerns regarding installation please contact Tech@CDCdetroit.com or call 866-624-7997.