

CDC

CLASSIC DESIGN CONCEPTS

2015-2022 Mustang Lightbar (All Models)



Note: READ instructions before starting installation!!!

Components:

CDC Part#

- | | |
|--|---------------------|
| • 1 –CDC Lightbar | |
| • Driver side bracket | 1511-6001-05 |
| • Passenger side bracket | 1511-6002-05 |
| • 1 – Hardware Kit | 1511-6500-01 |
| • 4 – Zip Ties | 116053 |
| • 2 – 5/16"-18 x 1" Hex Head Bolts | 25000 |
| • 2 – 5/16"-18 Serrated Flange Nuts | 45000 |
| • 1 – 5/16"-18 x 3/4" Thread cutting bolt | 25010 |
| • 1 – 3M Red T Tap | 117032 |
| • 1 – Shut Off Switch | 5900 |
| • 1 – Wire Harness | 1511-6003-01 |
| • 3M Tape Kit for Transponder relocation (some 2018+ models) | |
| • 1 – Installation Instructions & Templates | |

Tools Required:

- Drill Motor • Center Punch • 1/8" Drill 3/16" • Drill 2" Hole Saw
- Scissors • Masking Tape • Razor Blade • Measuring Device • Flashlight
- Side cutters • Needle nose pliers • ¼" long reach Allen key • 9/16" Socket
- Ratchet • 7mm socket • 8mm socket • 10mm socket • 15mm socket or wrench
- T-25 Torx bit or 11mm wrench • (2) 12mm wrenches • ½" Socket • Test Light

2015-22 CDC Lightbar Installation Manual:

1. Disconnect the negative battery cable. (8mm socket or wrench)
2. Remove rear seat bottom. Depress plastic clips with fingertip on both sides and lift.



3. Remove seat belt guide from upper quarter trim panels.



4. Dislodge the upper trim panels, but do not remove yet. Pull up evenly on panel to release the plastic retainers. **WARNING:** Do not pull too hard on the front of the panel at the seat belt area, as you may risk stressing the plastic causing permanent damage to the part.

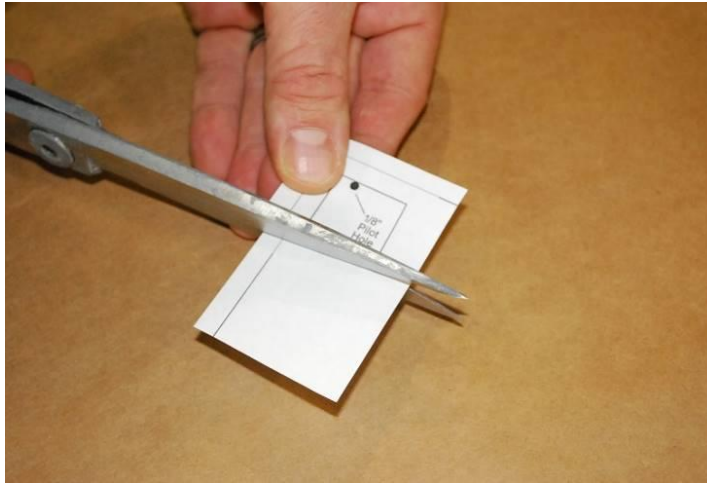


CD4II3DJ

5. Disconnect electrical connector located behind the seat belt guide and remove upper quarter trim panel. **Note: Connector not present on all vehicles.**



6. Cut out the provided trim panel templates. (Located on last sheet of this instruction manual.)



7. Place upper quarter trim panels upside down on a soft surface. Place templates in the areas shown in picture. **CAUTION:** Make sure that the templates are facing the correct direction, use picture as reference!



8. Use a center punch to mark the pilot hole locations.



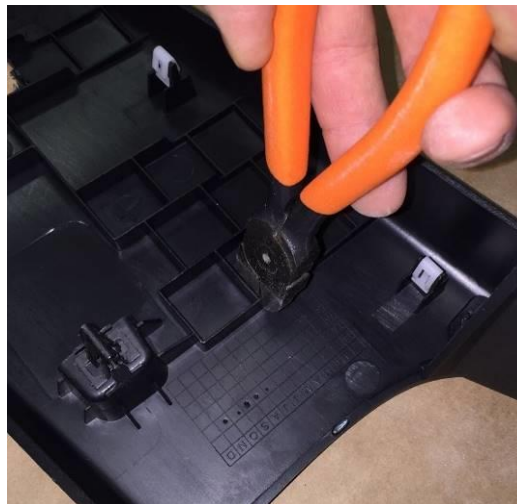
9. Drill panels with 1/8" pilot drill.



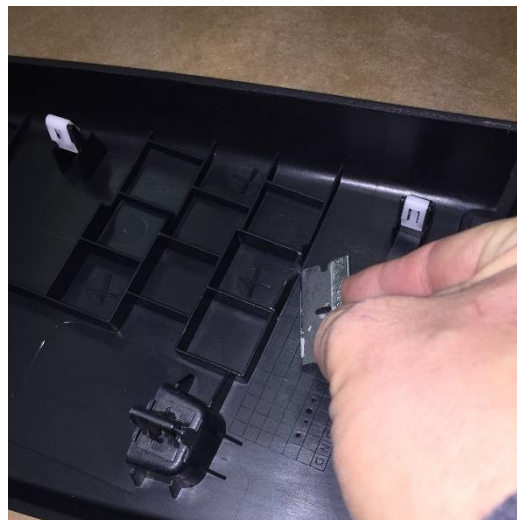
10. Flip panels over a drill 2" holes with hole saw and set panels aside for later reinstallation.
Note: You may want to apply masking tape to the area in case your hole saw slips.



11. On the bottom of the **PASSENGER** side upper quarter trim panel, cut and remove the plastic tab as shown in pictures below. This will create clearance for the Shut-Off Switch installed in step #20.



Carefully score with razor blade and snap off plastic tab.



Remove and discard plastic tab.



12. Remove the quarter trim panels.



HINT: It's very helpful to release the plastic retainers that secure the panel to the speaker housing with a pair of needle nose pliers.

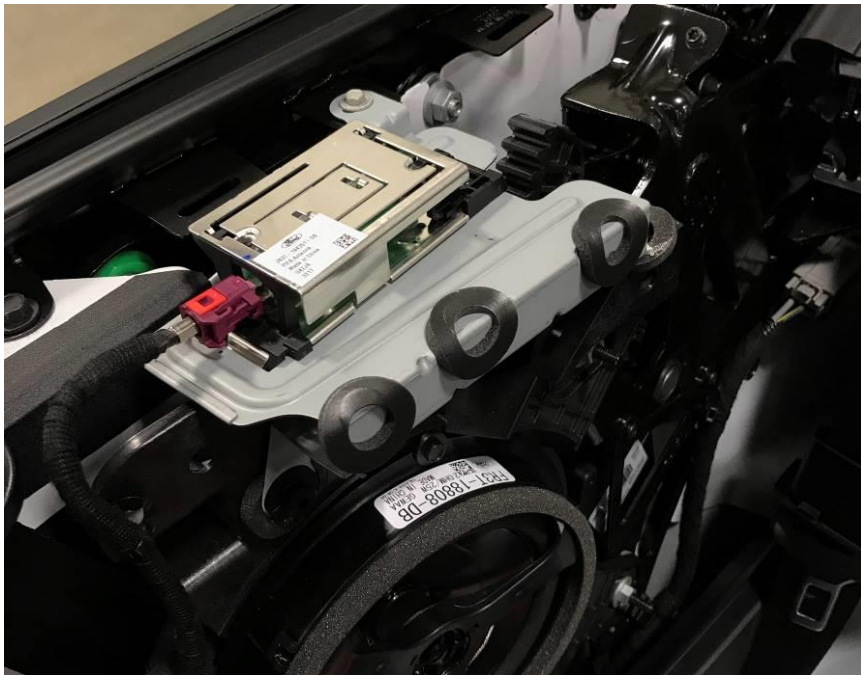


As shown below, the lower portion can remain in the car.



13. **IMPORTANT: SOME 2018+ MODELS** are equipped with a Transponder, located just rear of the seatbelt guide on top of the B pillar. This will need to be removed and relocated for installation of the passenger side Lightbar bracket. Remove the Transponder from the mounting bracket, remove and discard the mounting bracket as it will NOT be reinstalled. In the hardware kit, you will find 3M tape, alcohol pack, and 3M Adhesion promoter. Clean the back side of the Transponder and the inside upper portion of the Upper Trim panel, apply the Adhesion Promoter and allow to dry, apply 3M tape, and press firmly onto Upper Trim Panel upon reinstallation of the Upper Trim Panel. (Some 2021+ Models may require same process on Driver Side Panel)

Original Transponder Location



Transponder Relocated to back side of Upper Quarter Trim Panel



Skip to next step if this does not apply to your install.

14. Remove speaker assembly attachment hardware. (3) 10mm nuts, and (1) 7mm hex head screw. Also need to remove electrical component from "B" pillar. (1) 10mm Stud, and (1) 7mm hex head screw.





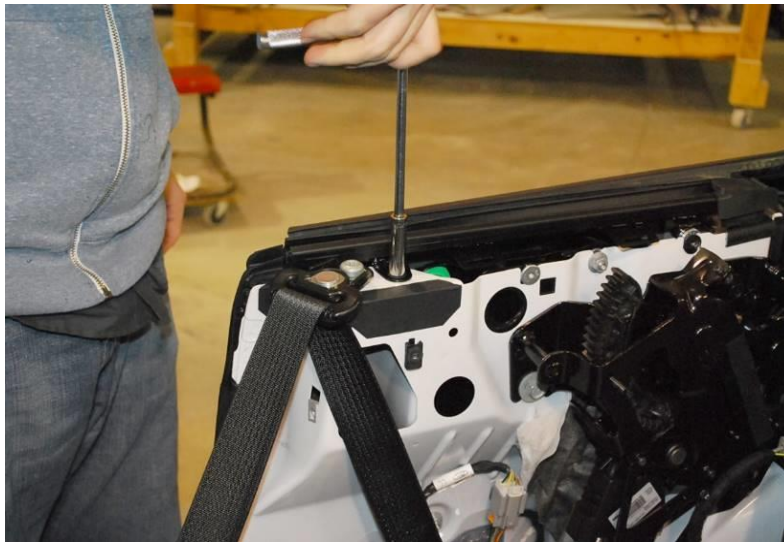
No need to disconnect the wiring, allow speaker to hang as shown in picture below. Place a cloth or rag between the panel and speaker bracket to avoid scratches on the quarter trim panel.



15. Remove rubber grommet. Set aside to be reinstalled later.



16. Remove 10mm window trim fastener.



17. Remove 15mm convertible top fastener. Set aside to reinstall.



18. Install passenger side bracket. (Brackets are labeled.) Reinstall the 10mm window molding bolt, hand tighten at this time.



Reinstall the 15mm convertible top bolt, hand tighten at this time.



Install the provided 5/16" Button Head bolt through the hole in the center of the bracket and the pre-existing hole in the vehicle.



NOTICE there is NO metal drilling due to CDC's Patent Pending bracket system.



Tighten with 9/16" socket or wrench, serrated nut should hold itself.



Torque convertible top bolt to 221 IN-LB.



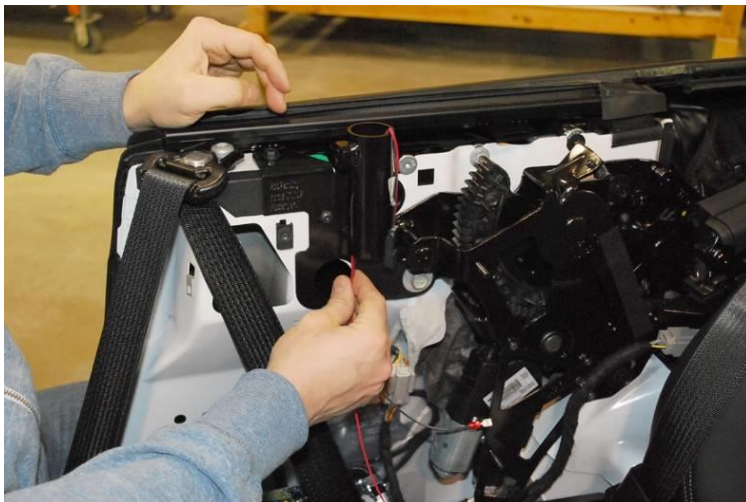
Do not exceed 80 IN-LB.



Install rubber grommet (removed in step # 14) into bracket as shown.



19. Install provided Lightbar wiring harness. Feed connector up through the bottom side of the receiver tube of the bracket, and bend wires over as shown in picture below. (Bending the wire over will temporarily hold the harness in place.)



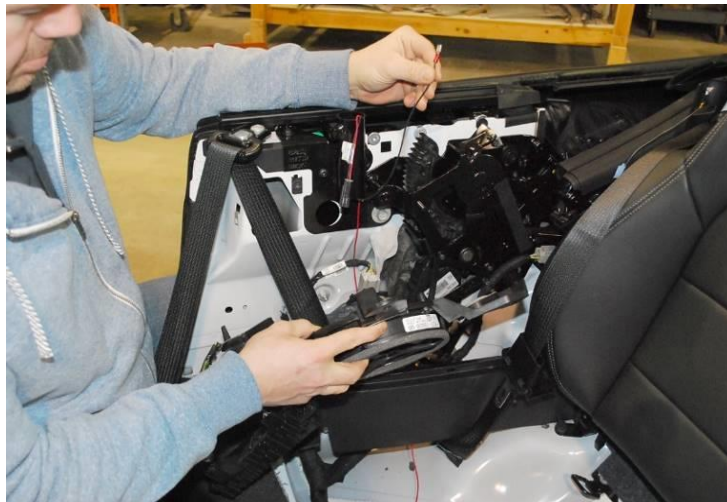
Route the positive wire (red) as shown, and use a provided zip tie to secure the harness to the existing wiring. **IMPORTANT:** Make sure to safely route wiring away from moving parts (seat belt retractor and convertible top mechanism).



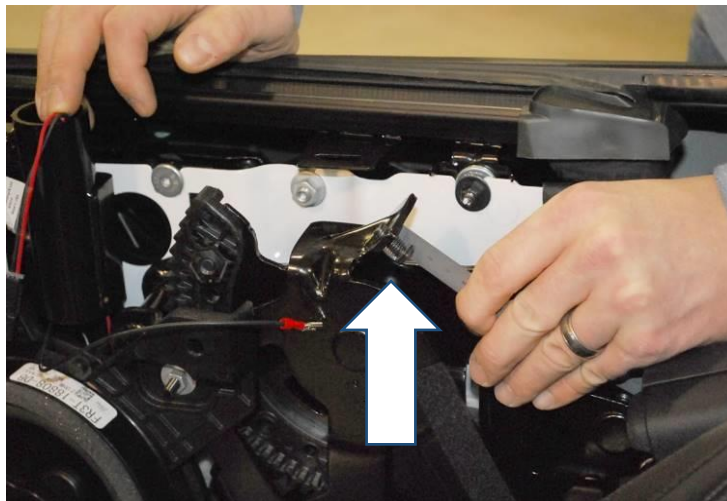
Route wire behind lower quarter trim panel.



20. Reinstall speaker assembly and electrical component on “B” pillar using the original hardware.
Note: Make sure ground (black) wire on the CDC harness remains accessible.



21. READ this step completely before proceeding. Measure the distance of the convertible top bump stop from the base of the bracket to head of the bump stop and record the measurement. Remove bump stop using a T-25 Torx bit, or an 11mm wrench.

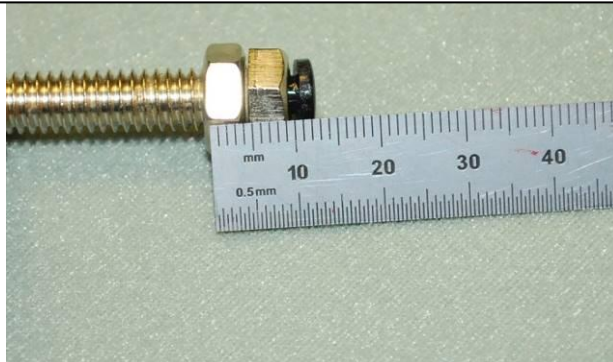


Using the supplied 5/16”-18 thread cutting bolt (1/2” head), re-thread the bump stop hole.
Remove bolt and discard, it is only used to create the new threads.



Supplied Cut Off switch pictured below. Used to “break the ground” when the convertible top is up so that the LED brake light in the CDC Lightbar is disabled. Adjust jamb nut to measurement in step #20.

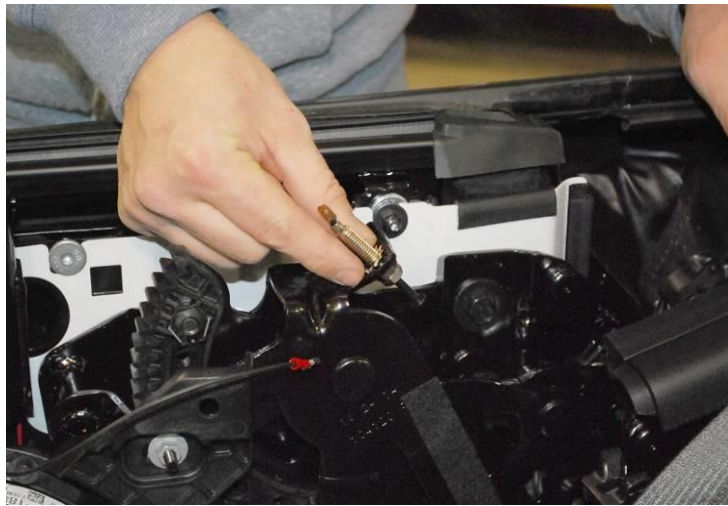
Compress Switch as shown in picture, adjust jamb nut to achieve same length as measured in step #21 from end of nut to end of black plastic. If jam nut bottoms out before desired measurement is achieved, remove jam nut & replace nut with washers until measurement is attained.



22. Install the plunger switch. Using your dimension from step #20, set the jamb nut. **HINT:** Adjusting the jamb nut like the previous picture should get you very close, adjust if needed. Thread the switch into the bump stop hole so that the connector is facing up and toward the front of the car.



Install the supplied washer.



Install the provided nut with a pair of 12mm wrenches. **WARNING:** Do not exceed 60 IN-LB.



With a pair of pliers, bend the connector tab 90 degrees. As shown.

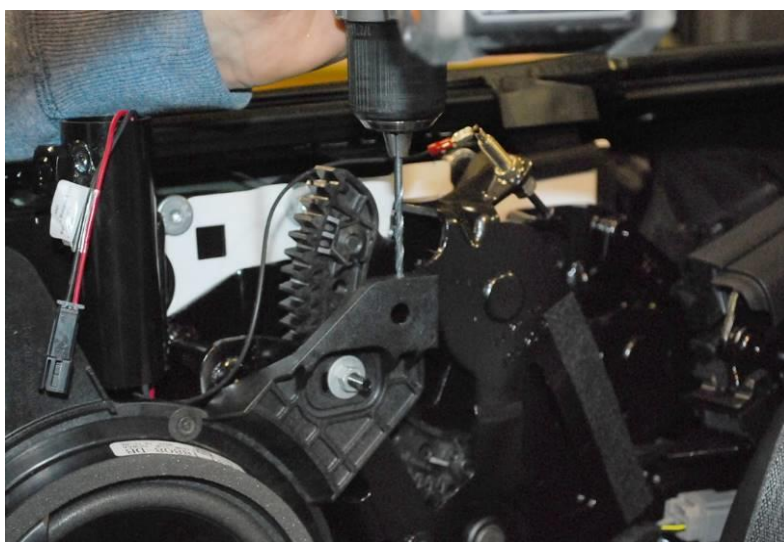


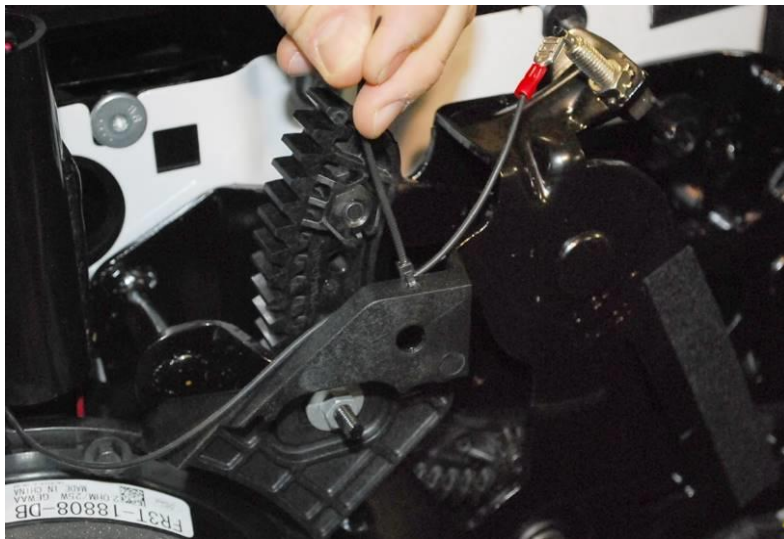
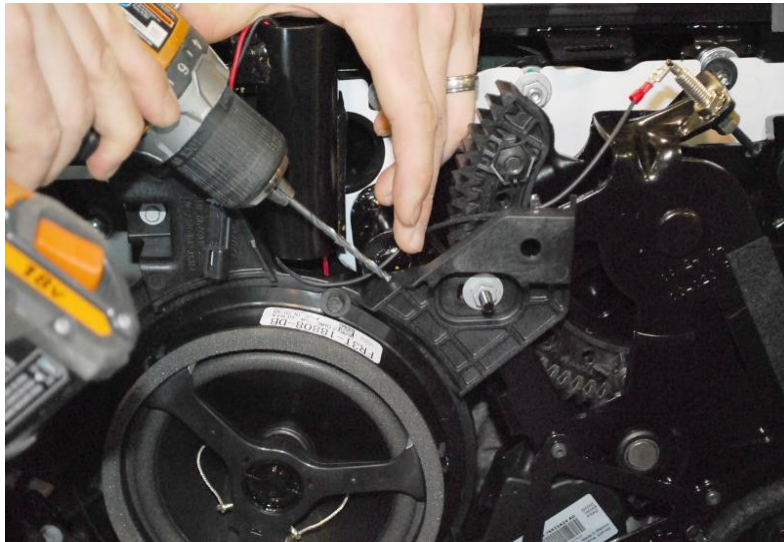


Connect the ground wire to the Shut Off Switch.

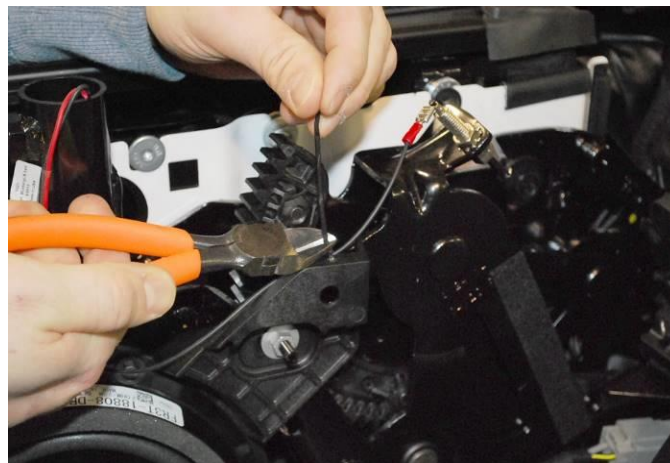


Drill (2) 3/16" holes in the speaker housing to and secure ground wire with zip ties as shown below.



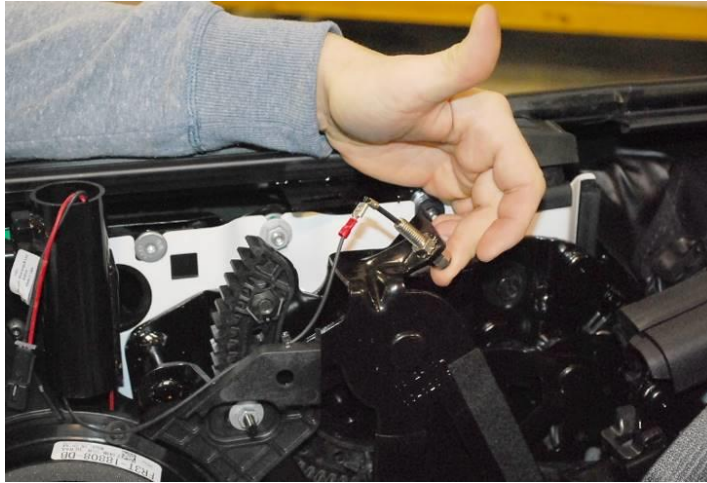


Trim the ends of the zip ties.



CD4II3DJ

Depress the switch a couple times, paying attention to the travel of the switch. Make sure there is adequate length of wire, and not excessive length.



23. *****VERY IMPORTANT READ COMPLETELY***** Connect the power + (red) wire from the Lightbar harness. Locate the bundle of wires (passenger side floor below quarter trim panel), remove loom to access wires carefully to avoid damaging any wires. There are 2 **YELLOW WIRES with SILVER stripes**, the correct wire is usually located near the bottom of the bundle. Check with a test light while depressing the brake pedal to assure you have the correct wire. **USE A FLASHLIGHT, IT WILL SAVE YOU SOME TIME, and you could avoid a mistake.**



Connect the provided **RED T-Tap** to the **yellow/silver stripe** wire. Simply place the wire in the center of the metal tab of T-tap, fold the T-tap, and squeeze the T-tap with a pair of pliers. Rotate the T-tap a couple of times after it's been closed to ensure a good connection. Now, plug in the **SPADE CONNECTOR** from the Lightbar harness. **HINT:** Make sure the spade is in the center of plastic isolator.



Place a zip tie around the bundle of wires.



24. Reinstall the quarter trim panel.



Note: Be aware of the alignment posts on the panel.



Reinstall electrical connector.



WARNING: Make sure trim panels are tucked in behind the convertible top as shown below. Damage will occur to the trim panel when top is cycled if this is overlooked.





Snap seat belt guide back in place.



25. Repeat process on Driver side. Go back to #12 if needed. **NOTE:** There will be no wiring to contend with, and no electrical box to remove from the “B” pillar on the Driver side.

26. Reinstall seat bottom.



CD4II3DJ

27. Install CDC Lightbar. The use of a second set of hands will make this step easier and safer.



After plugging in the connector, push the excess wire up into the steel tube.



With the help of a flashlight, access the set screw through the seat belt slot.



CD4II3DJ

Tighten the set screw with a “T” handle ¼” Allen wrench (or similar). Apply slight downward pressure on the Lightbar to ensure a nice fitment to the trim panel, and tighten the set screw. Repeat on opposite side.



28. Reconnect the battery cable and test the LED brake light.



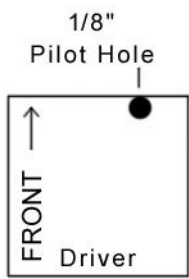
29. Cautiously cycle the convertible top a couple times. Make sure there is no interference between the upper quarter trim panels and the top, and that the Shut Off switch is operating correctly.

Thank you for choosing Classic Design Concepts for your restyling needs. If you have any questions or concerns regarding installation please contact Tech@CDCdetroit.com

CD4II3DJ

or call 866-624-7997.

Page Blank Intentionally



2015 LightBar
Trim Panel Pilot Hole
Templates

