



iLight Lightbar Wiring Instructions 2005 - 2014 Mustang

****Read entire installation guide before starting.**



Component List:

- | | |
|---|-------------|
| 1 – iLight / Brake Light Wire Harness (included with Lightbar) | CDC# 5001a |
| 2 – Red T-Tap Connector (05-09 require 2, 2010 & newer require 1) | CDC#117032 |
| 1 – Male Spade Connector | CDC# 182003 |

Tools Required:

- 1/4" Ratchet
- 10mm 1/4" Drive Socket
- Trim Panel/Fork Tool
- Needle-Nose pliers
- Wire Crimpers
- Wire Strippers

2010 – 2014 Installation:

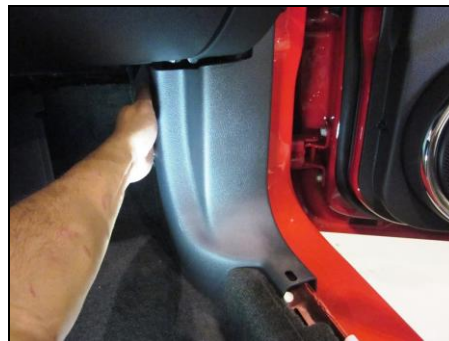
1. During the Lightbar installation process, you will be routing the Lightbar iLight/Brake Light wire harness through the passenger-side mounting bracket (Step 3A). Wire the brake light wires per the Lightbar installation instructions.



2. Remove plastic sill plate; be careful not to bend part.

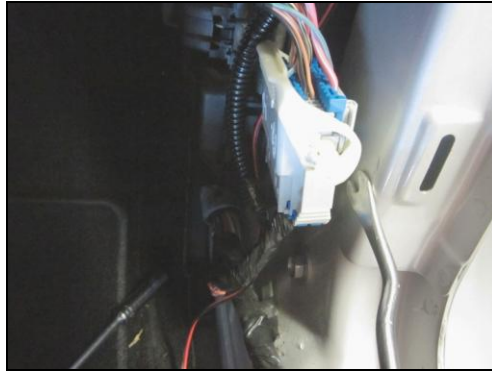


3. Remove the 2-piece passenger kick-panel plastic covers, exposing wire harnesses. Pull rear-ward on large portion of kick panel to dislodge clips.

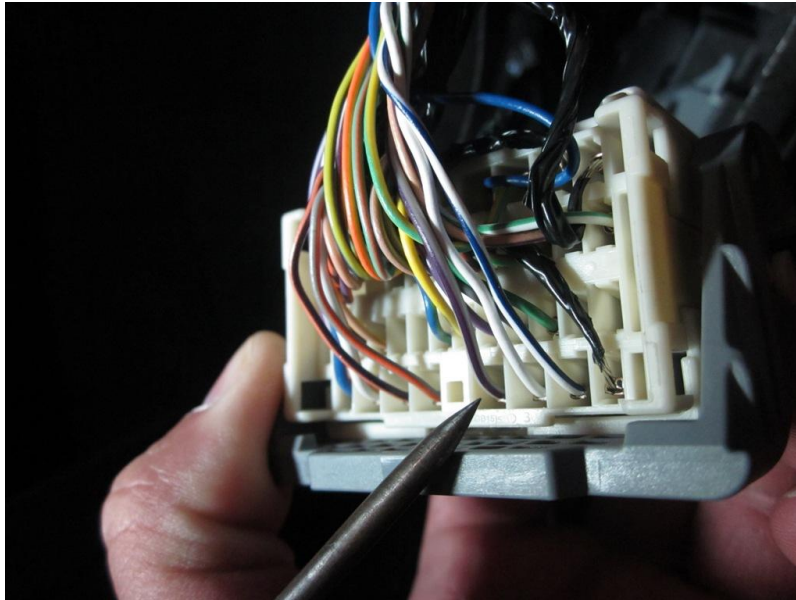


4. From the Lightbar bracket, route iLight wire harness downward behind the plastic trim panel and forward toward the passenger kick panel area. Route the harness along the existing body harness (behind the carpet) and secure with electrical tape or plastic zip ties. Be sure the wire will not chafe or get pinched along any sharp metal edges.

5. Locate the large wire connector in the passenger kick panel area; it may be helpful to dislodge the connector from the car using a trim panel/fork tool.

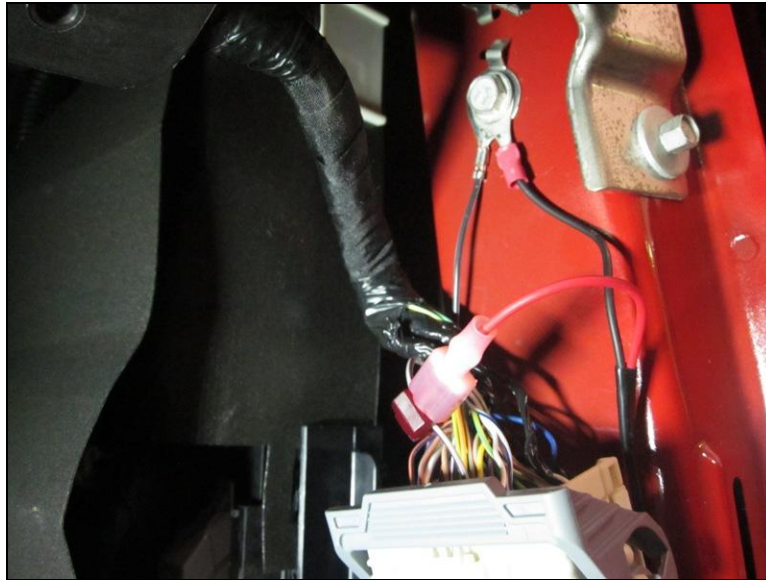


6. Looking at the back of the upper-half of the connector, locate the wire in **pin #4**, **GRAY w/ PURPLE stripe** (see pointer below).



This wire will feed the positive side (red wire) of the iLight. A few inches from this large connector, attach a red T-Tap (provided) connector to this Gray/Purple stripe wire, closing the T-Tap firmly with pliers.

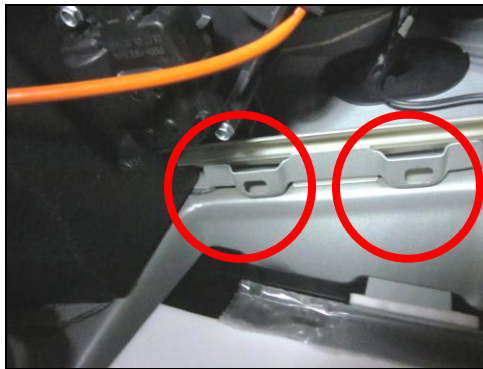
7. Connect the spade connector from the red wire of the iLight harness to the T-tap. See picture on the following page.
8. Located directly above this large connector is a ground bolt. The Black wire of the iLight harness has a ring connector attached. Ground this black wire using the ground bolt above the connector; see picture on the following page.



9. Secure any loose iLight wires as needed. Reinstall kick panel trim pieces and reinstall plastic sill cover.
10. Resume remainder of Lightbar installation.

2005 – 2009 Installation:

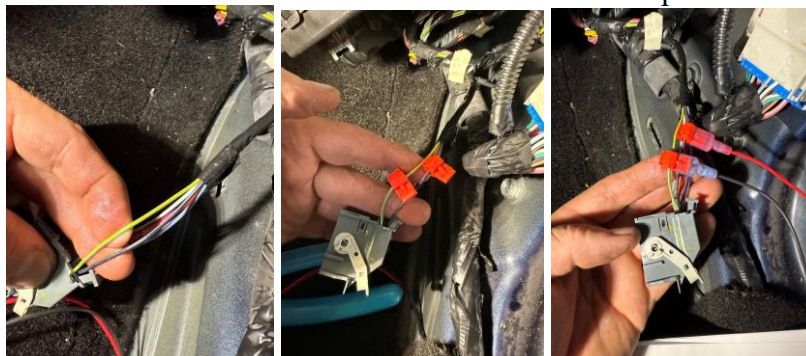
11. Follow steps 1-3 above.
12. Unbolt Smart Junction Box (SJB) located behind kick panel. Start with 10mm nut located at bottom of SJB. Pull on the lower part of the SJB outward toward center of car. Top of SJB is held to car using J-hooks and slots; see pictures for reference. Raise lower part of SJB until you can dislodge J-hooks at top of SJB.



13. Carefully maneuver SJB around to access back panel, locate top gray electrical connector and disconnect carefully by depressing lock and pivoting arm. Pictures on following page.



14. Connect the iLight's red wire to this connector's black w/ light blue stripe wire, via the provided t-tap and male spade connector. Connect the iLight's black wire to this connector's green w/ yellow stripe wire via the t-tap and male spade connector. The iLight harness has a ring connector already installed for the 2010-14 model. For the 05-09 installation you will need to snip off that ring terminal and crimp on the provided blue male terminal on the black wire as seen in the picture below.



15. Reinstall gray connector to SJB, reinstall kick panel and door sill, resume remainder of Lightbar installation.

TESTING iLight OPERATION

16. Connect iLight/brake light connector to Lightbar at trim panel mounting bracket area.
17. Close all doors and with keyless entry remote, lock doors. This should turn off any interior dome lights. Unlocking the car w/ the remote should turn on the interior dome lights, including the iLight. Test complete.
18. While sitting in the driver's seat, close all doors and lock car, which should turn off all interior lights. At the headlight switch, roll the dimmer "dial" switch all the way up, so that interior lights turn on. The iLight should illuminate as well. Turning off the interior lights w/ same dial switch should turn off iLight. Test complete.
19. If iLight is not responding, check connections at passenger kick panel. Many times when the male spade connector is crimped to a wire, the metal blade within the connector gets pushed to one side of the insulation, and fails to make contact inside the red T-Tap.
20. LED is polarity specific; it will not function if the wires have been reversed.

Thank you for choosing Classic Design Concepts for your restyling needs. If you have any questions or concerns regarding installation please contact Tech@CDCdetroit.com or call 866-624-7997